



Share With Us!

We'd love to see
your finished project!
Send a photo to
mindyfarmer@perryia.org
and we may share it on
our Facebook album or at
www.perry.lib.ia.us!



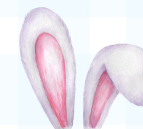
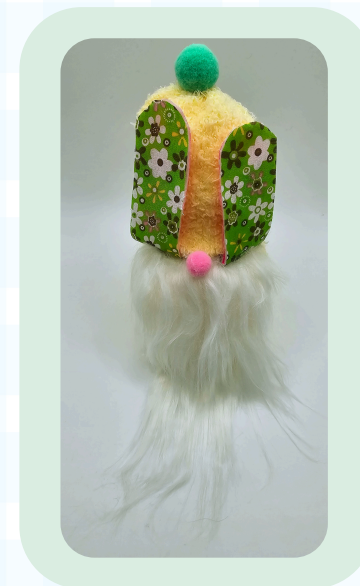
Contact Us:



Mindy Farmer
Adult Services Librarian
515-465-3569
mindy.farmer@perryia.org

Perry Public Library MARCH

ADULT GRAB & GO CRAFT



DIY Easter Sock Gnome



Instructions

1

Cut your sock into 3 pieces, cutting perpendicular to each sock edge.



2

Take the toe side of the sock for your body. Fill it with 1/2 cup of beans.



3

Add fiber fill to gnome, stuffing firmly. Place a rubber band at the top of the sock to secure it. Set aside.



4

Take the top sock piece and flip it inside out. Use a rubber band to secure the raw edges.



5

Flip the sock back. Add a small amount of fiber fill to the head. Set aside.

6

Trace the beard pattern on the back (non-fur side) of the faux fur. Comb the fur toward the inside. Cut the beard at an angle.



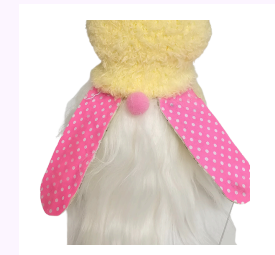
7

Cut 2 ears out of each fabric (4 total). Cut out two felt ears. Glue 1 type of each fabric to 1 side of each felt ear.



8

Glue the faux beard to the body. Glue the top of the ears face down on the beard. Glue the top sock so that it lays over the top the ears and beard and goes slightly lower in the back.



9

Glue the small pom-pom between the ears for a nose, a medium pom-pom on top of the hat, and the last pom-pom on the back for a tail.



10

Fold the ears up over the top sock and glue them to each side of the gnome "face."

